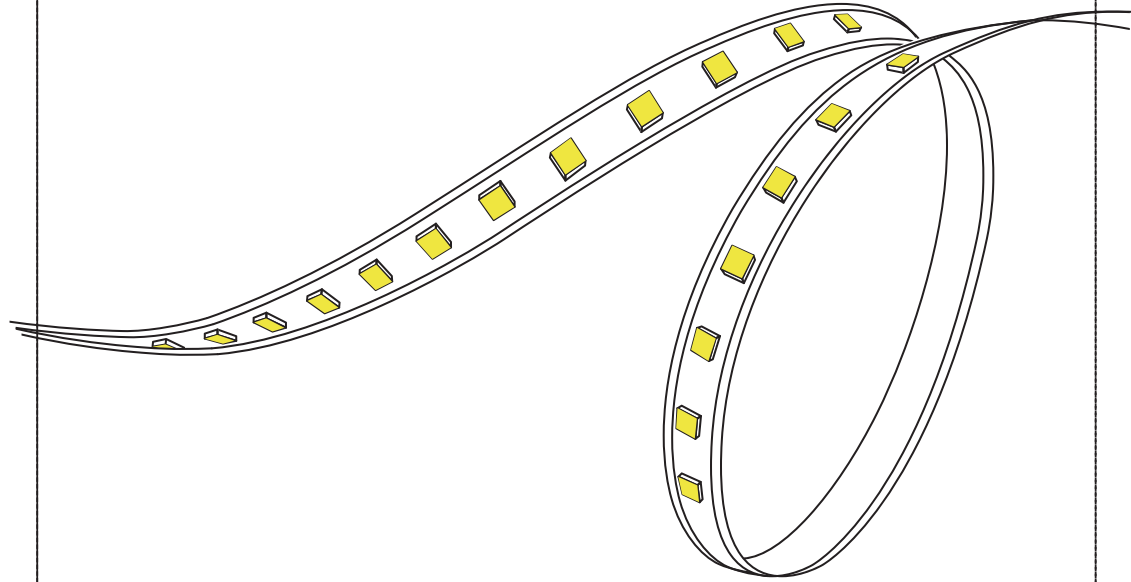


USER MANUAL

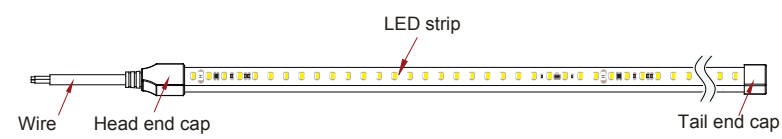
AC Voltage Silicone Strip



Please read the manual carefully before installation and application, and use the product in the correct way by the qualified professional electrician.
 Instructions on accessories are included in the manual.
 Please properly maintain the manual after reading and understanding it for convenient reference by all users of the product in the future.

1. Product information

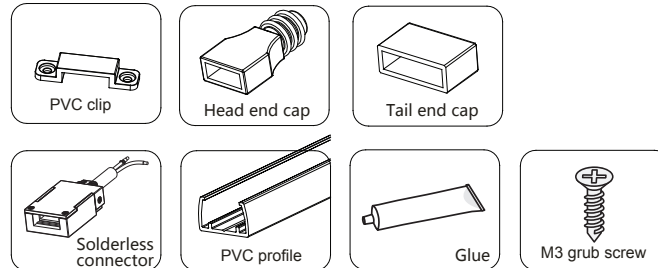
1.1 Product drawing



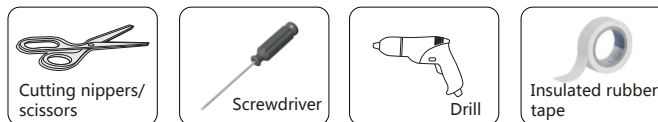
Please refer to specifications for more details

2. Installation accessory (Ordered separately by customers)

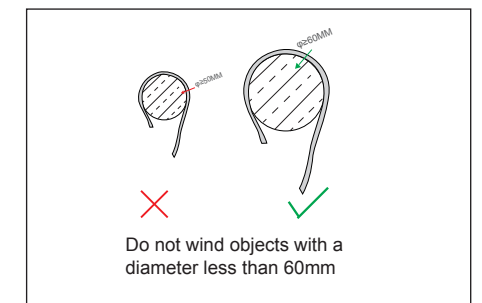
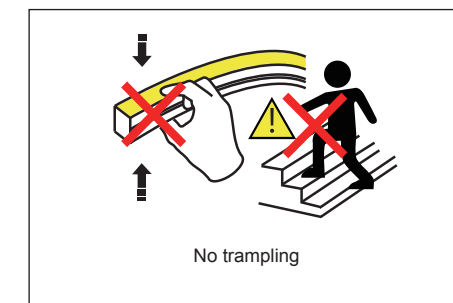
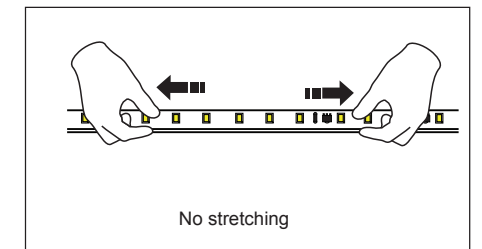
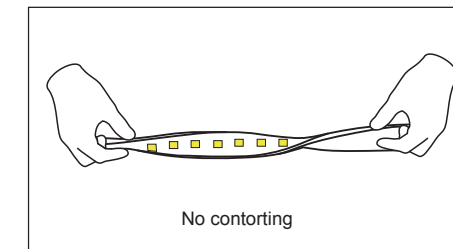
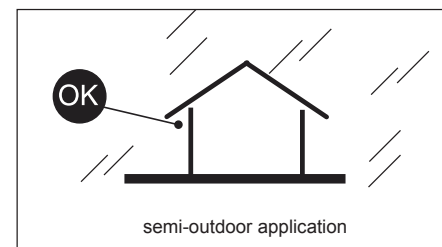
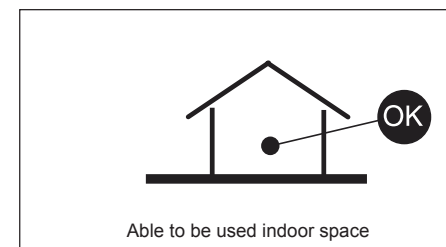
2.1 Ordering- accessory (additional purchase)



2.2 Self-provided tools

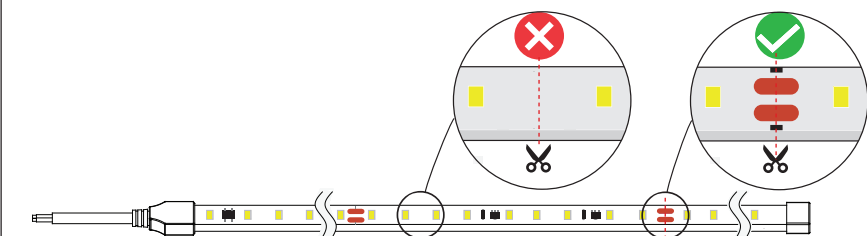


3. Precautions before installation



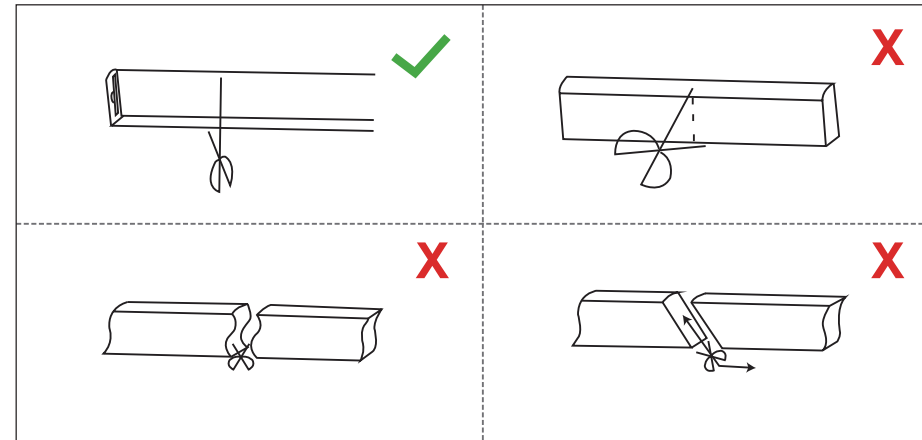
4. cutting and connection instruction

Cutting drawing



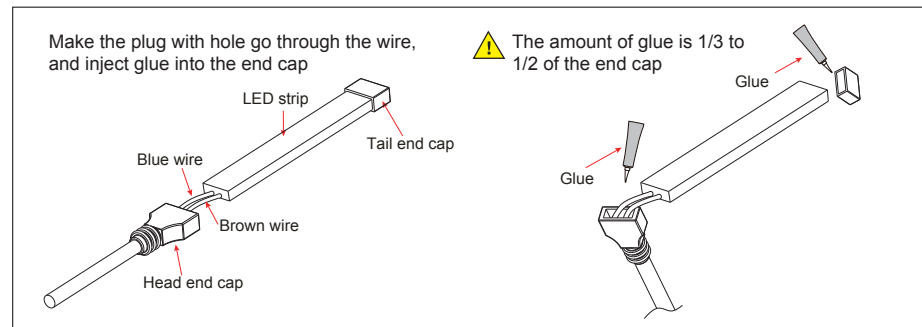
Cutting along the dotted line, the area except the identified location can't be cut.

4.1 Cutting method

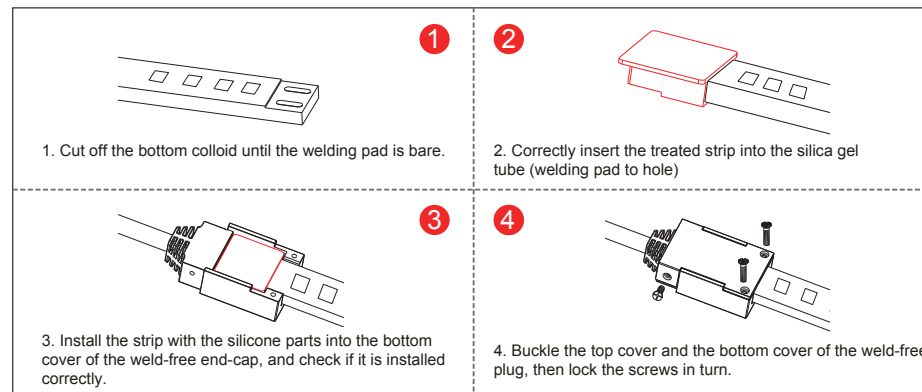


4.2 Processing drawing after cutting

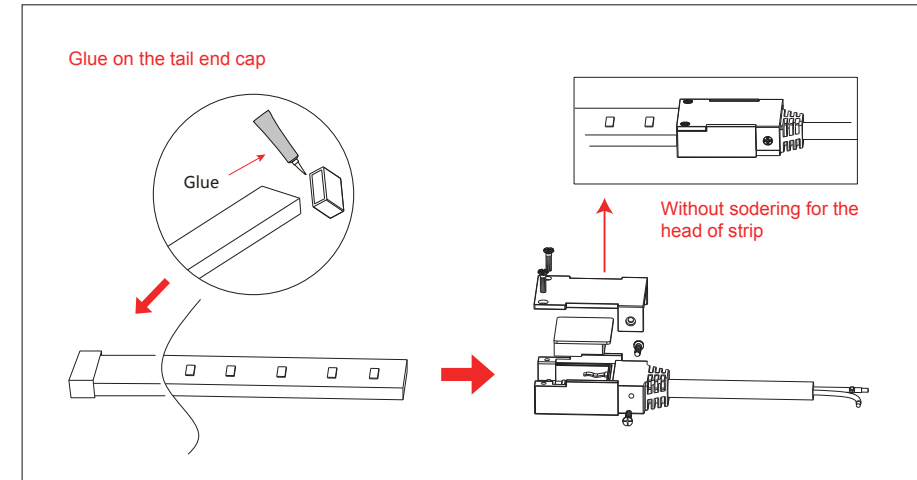
A: Soldering gluing



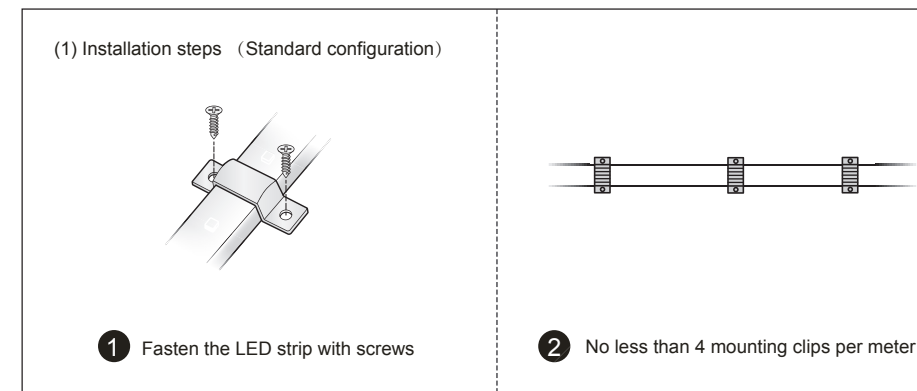
B: Weld-free end-cap connection mode



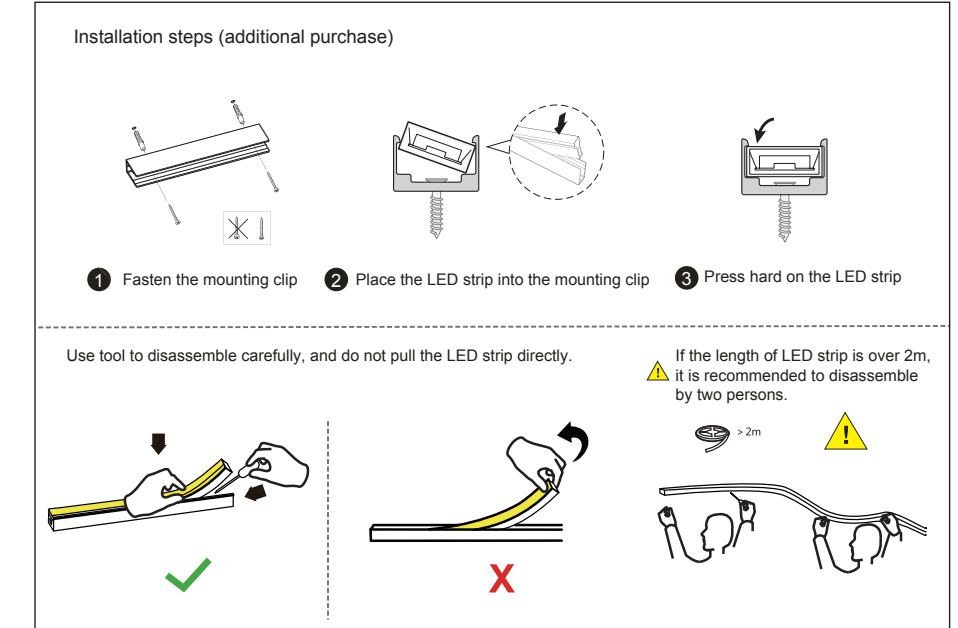
C: Solderless connector



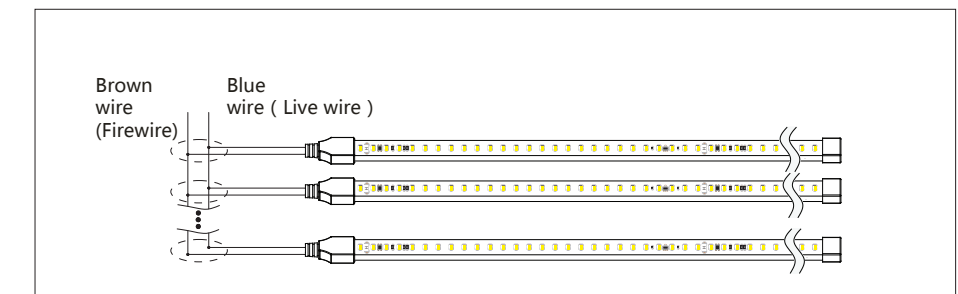
5.1 Clip installation



5.2 Carrier installation



6. Wiring diagram



Notices

1. Risk of electric shock, non-professionals are not allowed to operate the product, if the LED strip is damaged, the product must be replaced.
2. Make sure the supply voltage meets the requirements and the circuit is installed correctly before power supply.
3. Make sure the electric connection is reliable and is well protected.
4. Cut off the power before operating the product.
5. Forbidden to use in water.